

# Digital Signboard XDS-195

18.5-inch Widescreen HD Network Display



The IAdea XDS-195 Digital Signboard is a SMIL programmable digital signage device with dedicated hardware-based High Definition (HD) video playback. The device is designed primarily for use with a management server.

## Hardware HD video decoder and 18.5” LCD

The XDS-195 offers the industry’s highest standards for hardware video decoding. Support for *S1* to *S12* media profiles, as defined by POPAI, the industry’s standards establishing organization, simplifies device selection and content creation. **Multi-zone screen layout**, transparent PNG overlay, and graphical scrolling ticker support offer greater flexibility for signage display. The 18.5-inch LCD panel with 16:9 wide aspect ratio offers 1366x768 resolution for optimal presentation of HD video and stills on a mid-sized display unit.

## VESA mountable integrated signage unit

The XDS-195 integrates essential signage hardware and features in a VESA-mountable display unit. A watchdog timer lets the display recover and resume playback from power, network, or other disruptions. The all metal enclosure provides reliable passive cooling and features screw-lock connectors to prevent loose cables. Covered CF card slot lets you expand beyond the 4GBs of built-in solid-state local storage while preventing removal of card. In addition to a built-in Ethernet port, the XDS-195 provides built-in wireless b/g/n (2.4GHz only) to offer connected signage via a single power cord.

## Works with your management solution

IAdea’s SMIL open standard players offer a new class of dedicated hardware that works with your existing management solution. IAdea works with leading signage companies to provide a repertoire of modular signage hardware, from shelf-top 10” digital signboards, HD poster displays, to Blu-ray-quality HD video appliances and 24” all-in-one Full-HD video signboards. Developers can also leverage W3C SMIL (Synchronized Multimedia Integration Language) compatibility across various SMIL based signage appliances to meet project-specific budgets and changing criteria.

## Highlights

- ◆ **Hardware HD video decoder and 18.5” LCD**
- ◆ **VESA mountable integrated signage unit**
- ◆ **Works with your management solution**

## Suitable for

- ◆ **Airports & train stations**
- ◆ **Hospitality and conference venues**
- ◆ **Electronic menu boards**
- ◆ **Chain store merchandising**

# Technical Specification

## POPAI Screen Media Standards Support

- S1 (JPEG 480p baseline)
- S2 (JPEG 720p baseline)
- S3 (JPEG 1080p baseline)
- S4 (MPEG L2 audio)
- S5 (MP3 audio, 384Kbps)
- S6 (MPEG-1 SIF, 3Mbps CBR)
- S7 (MPEG-1 480p, 10Mbps CBR)
- S8 (MPEG-1 720p, 15Mbps CBR)
- S9 (MPEG-2 480p, 6Mbps CBR)
- S10 (MPEG-2 720p, 12Mbps CBR)
- S11 (H.264/MPEG-4 AVC, 480p, 6Mbps CBR)
- S12 (H.264/MPEG-4 AVC, 720p, 10Mbps CBR)
- E1 (PNG 24bpp+alpha, 480p)
- E2 (PNG 24bpp+alpha, 720p)
- E3 (PNG 24bpp+alpha, 1080p)
- E4 (VC-1/WMV9, MP@ML, 720p)
- E5 (VC-1/WMV9, MP@HL, 1080p)
- E6 (MPEG-2, 1080p, 20Mbps CBR)
- E7 (MPEG-4 ASP, 480p, 10Mbps CBR)
- E8 (H.264/MPEG-4 AVC, 720p, 10Mbps CBR)
- E9 (H.264/MPEG-4 AVC, 1080p, 25Mbps CBR)

## Digital Signage Features

- Multi-zone screen layout, transparent PNG overlay, and graphical scrolling ticker
- Auto-play starts playing scheduled contents automatically when power is re-established
- Automatic error recovery with built-in WDT
- Real-time clock keeps time while unplugged
- Automatic NTP keeps time and date in sync

## Playback Control

- W3C SMIL 3.0 instructions (sub-set)
- Real-time clock playlist events
- Network playlist sync
- USB direct sync

## Content Management

- Manager Express starter utility
- Compatible with 3rd party solution (optional license)

## Display and Sound

- 18.5" 16:9 TFT LCD panel
- 300 nits maximum brightness
- 1366 x 768 panel resolution
- Built-in stereo speakers 2Wx2

## Local Storage

- Internal 4 GB flash memory (approx. 90 min of high def. video @5 Mbps)
- CF card slot (card replaces internal storage)
- Card capacity: up to 64GB

## Physical I/O Connectors

- Ethernet: RJ45 Port
- Wi-Fi: IEEE 802.11 b/g/n (2.4GHz only)
- 3.5mm Audio out
- USB x 2
- 5-Button OSD control

## Mounting Options

- VESA MIS-D 75 / 100 mounting points

## Accessories

- Power adapter
- Ethernet cable
- Wi-Fi antenna
- Monopod flex stand
- (Optional) PVK-202 VESA display stand



## Power supply

- Universal AC adapter: 12V DC / 5A
- UL/PSE (Japan) certified

## Power consumption

- 31 Watts (video playback at 100% brightness)

## Environmental

- Operating temperature: 0 to 40° C
- Humidity 5 – 85% @ 40° C non-condensing

## Dimensions (WxHxD)

- 17.4" X 10.4" X 2.1"
- (443mm X 263mm X 53 mm)

## Weight

- Approx. 8 lbs (3.63kg)

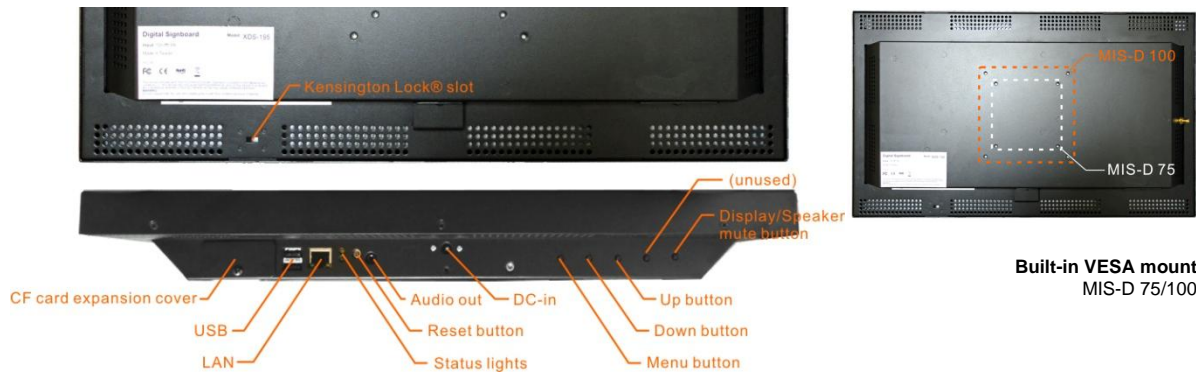
## Certifications

- CE/FCC/RoHS

## Warranty

- 1-year limited parts & labor

# Product Photos



Built-in VESA mount  
MIS-D 75/100

# Contact

**IAdea America Corp.**  
23 Monte Carlo,  
Irvine, CA 92614  
United States of America  
Email: [US-Sales@IAdea.com](mailto:US-Sales@IAdea.com)

**IAdea Corporation (Headquarters)**  
3F, No. 33, Alley 77, Xing-ai Road  
Taipei, Taiwan 114  
Phone: +886-2-2791-1110  
Fax: +886-2-2791-1170  
Email: [Sales@IAdea.com](mailto:Sales@IAdea.com)  
Website: <http://www.IAdea.com>

# Authorized Reseller

